

SDL 810/830/852nm Laser Diodes

SDL-5400 Series Single-mode Laser Diodes 810/830/852nm

Available in power levels up to 200 mW kink-free, this SDL advanced laser diode combines a quantum well structure and a real-refractive index-guided single-mode waveguide to provide high power, low astigmatism, narrow spectral width, and a single spatial mode Gaussian far field. SDL-5400 series laser diodes are among the most reliable high-power laser diodes available in the industry today.

The SDL-5400 series laser diodes operate in single longitudinal mode under some conditions. Like in all Fabry-Perot index-guided laser diodes, spectral broadening, mode hopping, and longitudinal mode instability may occur due to small changes in drive current, diode junction temperature, or optical feedback.

The unique diode structure features high reliability with long operating life, and very low early failure rate. Very high brightness (20 MW/cm² steradian) is provided by the SDL-5430.



List of SDL Laser Diodes available:

Wavelength	Output Power	Package Type	MPD	Part Number
50mW Output Power				
810nm ± 5nm	50mW	5.6mm window (3-pin) TO-56	✓	SDL-5401-J1 (810)
830nm -10/+20nm	50mW	5.6mm window (3-pin) TO-56	✓	SDL-5401-J1 (830)
830nm -10/+20nm	50mW	9mm window (3-pin) SOT-148	✓	SDL-5401-G1 (830)
852nm ± 10nm	50mW	5.6mm window (3-pin) TO-56	✓	SDL-5401-J1 (852)
100mW Output Power				
810nm ± 5nm	100mW	5.6mm window (3-pin) TO-56	✓	SDL-5411-J1 (810)
830nm -10/+20nm	100mW	5.6mm window (3-pin) TO-56	✓	SDL-5411-J1 (830)
852nm ± 10nm	100mW	5.6mm window (3-pin) TO-56	✓	SDL-5411-J1 (852)
150mW Output Power				
810nm ± 5nm	150mW	9mm window (3-pin) SOT-148	✓	SDL-5421-G1 (810)
810nm ± 5nm	150mW	5.6mm window (3-pin) TO-56	✓	SDL-5421-J1 (810)
830nm -10/+20nm	150mW	9mm window (3-pin) SOT-148	✓	SDL-5421-G1 (830)
830nm -10/+20nm	150mW	5.6mm window (3-pin) TO-56	✓	SDL-5421-J1 (830)
852nm ± 10nm	150mW	9mm window (3-pin) SOT-148	✓	SDL-5421-G1 (852)
852nm ± 10nm	150mW	5.6mm window (3-pin) TO-56	✓	SDL-5421-J1 (852)
200mW Output Power				
830nm -10/+20nm	200mW	9mm window (3-pin) SOT-148	✓	SDL-5431-G1 (830)
830nm -10/+20nm	200mW	5.6mm window (3-pin) TO-56	✓	SDL-5431-J1 (830)
852nm ± 10nm	200mW	5.6mm window (3-pin) TO-56	✓	SDL-5431-J1 (852)
MPD = Internal Monitor Photo Diode				
All lasers carry a warranty period of 90 days.				

Related Recommended Products

> Heatsinks

- **SDL-800-G (heatsink base with cable assembly for G-type package)**

> Laser Driver

- **SDL-800 (0-1A)**

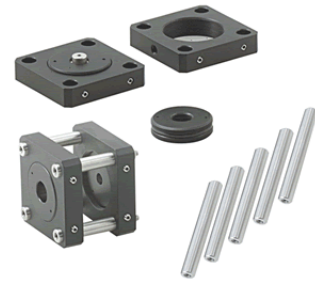
The SDL-800 laser diode driver (Laser Drive) is a general-purpose driver suitable for any CW laser diode. Designed specifically for safe and fault-free operation of laser diodes, the SDL-800 includes transient suppression, and diode protective circuits, a feedback amplifier, set-up mode with a dummy load, overcurrent limit, and full TE cooler control.

The driver provides 3-1/2 digit displays of six key operating functions. The thermoelectric cooler controller operates the TEC option.

> TO-3 Collimation Package

Ideal for collimating high power laser diodes, The TO3 collimation package can be used one of the two ways:

- (1) If the laser output is low, and no heat sinking is required, the laser can be mounted directly to the package.
- (2) For higher power lasers or in applications where better temperature regulation is required, the collimation package can be mounted directly onto any heatsink that is designed to accept TO-3 laser package.



Laser and lens not included.

Caution!

Operating the Laser Diodes at their maximum capacity, and without any proper heat sinking will affect the long-term reliability, and life of the Laser Diodes.



VIN KAROLA INSTRUMENTS

P.O. Box 922273
Norcross, GA 30010-2273
Tel: 770/409-1499
Fax: 770/447-8045
e-mail: info@vinkarola.com

Vin Karola reserves the right to make changes in Design, and specifications without notice or obligation.
© Vin Karola Instruments, 2008